
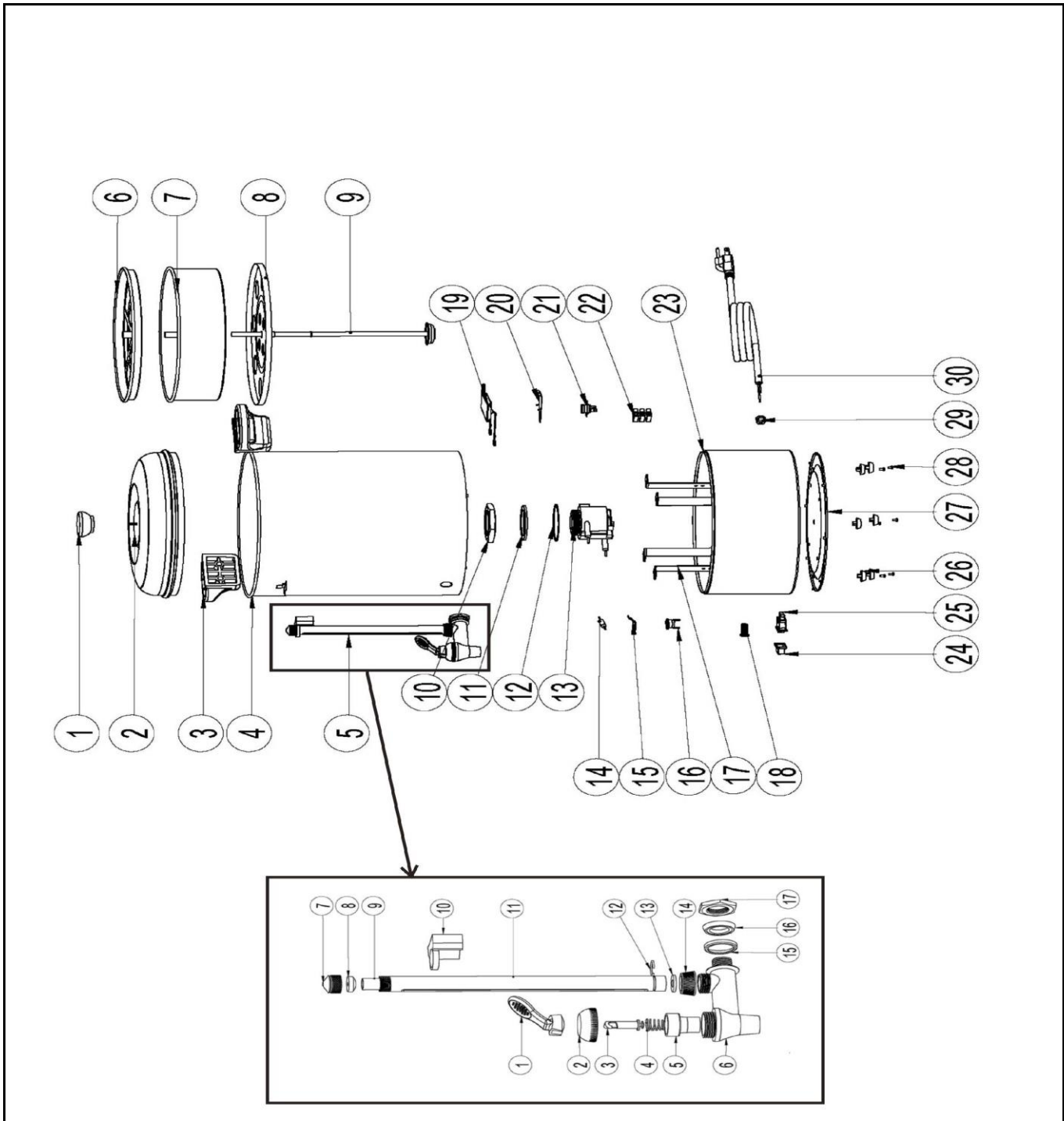



Drawing

 <b>HENDI</b> FOOD SERVICE EQUIPMENT  <b>Hendi B.V.</b> Steenoven 21 3911 TX Rhenen The Netherlands	Batch #	Appliance part#
	000000 until 101362	<b>208106</b>
	Description	
	Percolator 10L	

Date	31-01-2017	Revision #	Revision version
Revision	First bill of materials (BOM)		



### Bill of materials (BOM)

 <b>HENDI</b> FOOD SERVICE EQUIPMENT  <b>Hendi B.V.</b> Steenoven 21 3911 TX Rhenen The Netherlands	<b>Batch #</b>	<b>Appliance part#</b>
	000000 until 101362	<b>208106</b>
	<b>Description</b>	
	<b>Percolator 10L</b>	


<b>Date</b>	31-01-2017	<b>Revision #</b>	Revision version
<b>Revision</b>	First bill of materials (BOM)		

Item	Description	Part#	Quantity	Remark	Picture
1	Knob	nss	1	Available as 901236	
2	Lid	901236	1		
3	Handle	926239	2		
4	Container	n/a	1		
5	Graduation complete set	208250	1	(item 5-1 to 5-17)	
5-1	Lever	nss	1	Available in set 208038 and 208250	
5-2	Nut	nss	1	Available in set 208038 and 208250	
5-3	Axle	nss	1	Available in set 208038 and 208250	
5-4	Spring	nss	1	Available in set 208038 and 208250	
5-5	Silicone gasket	nss	1	Available in set 208038 and 208250	
5-6	Faucet	208038	1	Also available in set 208250	
5-7	Nut	nss	1	Available in set 208250	
5-8	Gasket (graduation glass)	208496	1	Also available in set 208250	
5-9	Graduation glass	900567	1	Also available in set 208250	
5-10	Holder (pipe graduation glass)	nss	1	Available in set 208250	
5-11	Pipe graduation glass	nss	1	Available in set 208250	
5-12	Ring	nss	1	Available in set 208250	
5-13	Gasket (graduation glass)	208496	1	Also available in set 208250	
5-14	Nut	nss	1	Available in set 208038 and 208250	
5-15	Plastic ring	nss	1	Available in set 208038 and 208250	
5-16	Gasket	nss	1	Available in set 208038 and 208250	
5-17	Nut	nss	1	Available in set 208038 and 208250	
6	Filter cover	nss	1	Available as 900291	
7	Filter basket	900291	1		
8	Tray	910818	1		
9	Pumpbar	900048	1		
10	Nut element	nss	1	Available as 900116	
11	Gasket element	nss	1	Available as 900116	
12	Washer element	nss	1	Available as 900116	
13	Element 1500W	900116	1		
14	Thermal fuse	900345	1		
15	Holder (thermal fuse)	n/a	1		
16	Clixon (88 degrees celc.)	900147	1		
17	Holder bottom cover	n/a	1		
18	Indication light	902059	1		
19	Element 80W	904268	2		
20	Holder element	n/a	2		
21	Clixon (200 degrees celc.)	900277	1		
22	Terminal block	926246	1		
23	Lower base	n/a	1		
24	Cover switch	900581	1		
25	Switch	900123	1		
26	Feet	900574	4	Sold per pcs	
27	Bottom cover	n/a	1		
28	Pin feet	nss	4	Available as 900574	
29	Cord retention	904374	1		
30	Powercord (H05RN-F 3Gx1,5mm)	930045	1		

n/a -> not available

nss -> not sold separately

### Circuit diagram

 <b style="font-size: 24px; font-weight: bold; color: red;">HENDI</b> FOOD SERVICE EQUIPMENT  <b>Hendi B.V.</b> Steenoven 21 3911 TX Rhenen The Netherlands	<b>Batch #</b>	<b>Appliance part#</b>
	000000 until 101362	208106
	<b>Description</b>	
	Percolator 10L	

<b>Date</b>	31-01-2017	<b>Revision #</b>	Revision version
<b>Revision</b>	First bill of materials (BOM)		

